

FPM-600

NETWORK TESTING—OPTICAL



- High accuracy, wide dynamic range and high power measurement capability (up to 26 dBm)
- Memory capacity of 1000 data items; enables data transfer to a PC via USB connection
- User-configurable pass/fail thresholds with LED indicator
- Over 40 calibrated wavelengths, and Hold Min/Max Power function
- Rechargeable batteries
- Error-free, time-saving test features: automatic wavelength switching, no offset nulling
- Low cost of ownership: three-year warranty and recommended calibration interval

Part of EXFO's 600 handheld series, which includes the FOT-600 Optical Loss Test Set, the FLS-600 Light Source, the highly versatile FPM-600 Power Meter is designed for link and system qualification. Its green/red LED indicator gives you a pass or fail test verdict according to the thresholds you have defined, for faster and easier field operation.

Thanks to its memory capacity of 1000 data items and its reporting software, the FPM-600 facilitates data management and enables data transfer to a PC via USB connection. Build a complete test report, including certification of the link with pass/fail information. Customize this report to your own needs.

Suited for All Network Types

NEW

The FPM-600 is a very powerful tool for the most demanding applications such as high-speed DWDM or CWDM network qualification. With more than 40 calibrated wavelengths, including all CWDM wavelengths, it allows for user-defined measurement wavelengths, using the interpolation method between calibrated points. Use its Hold Min/Max Power function to measure system power burst or fluctuations.

Error-free, Time Saving Test Features

NEW

When used in combination with a FLS-600 Light Source in Auto-Switching mode, the power meter automatically recognizes the wavelength in use and switches to the proper calibration parameter. At the press of a button, you can store results for all wavelengths at once.

FTTx Ready

EXFO's FPM-600 allows for the testing of passive optical networks (PONs) at 1310 nm, 1490 nm and 1550 nm, the three wavelengths recommended by the ITU-T (G.983.3) for PONs at once.

Rugged and Versatile

Like all EXFO portable instruments, the FPM-600 is built for top ruggedness and versatility, perfect for the harshest test conditions. It features a keypad/LCD backlight, for easy operation in darker environments. What's more, it is powered by a rechargeable battery.

Reporting Software

NEW

This new software tool enables you to produce professional-looking reports with comprehensive documentation. It also offers these functionalities:

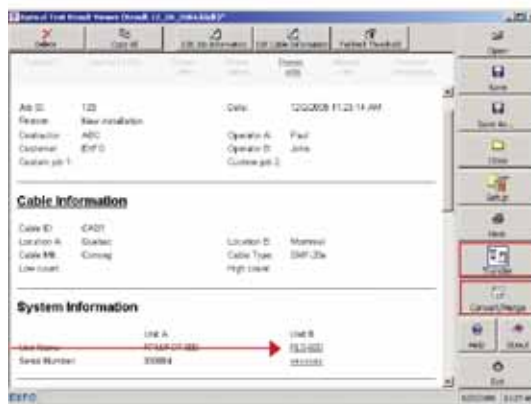
- Two test files can be merged into one test report (see note no. 3)
- Pass/fail thresholds that are active during download are automatically activated and displayed in the Report Viewer
- One-touch storage of results for all wavelengths at once (see note no. 1)
- Unit B configuration information can be input and documented (see note no. 2)
- Data transfer can be launched from the Report Viewer window (see note no. 3)
- A pass/fail threshold can be set for an individual fiber or wavelength (see note no. 4)

1
Store test results
for all wavelengths
at once



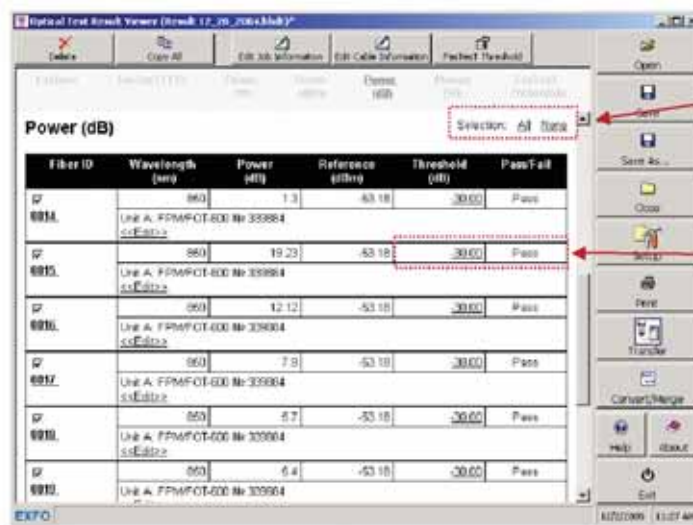
Optical Report Viewer: main window

2
Configure unit B
information



Optical Report Viewer: main window

3
Launch
data transfer and
converter/merger



Select all or no results in a specific section

Apply a specific threshold to each fiber and/or wavelength and get a complete pass/fail status (not available with FasTesT results)

4

Optical Report Viewer: main window

SPECIFICATIONS^a

Model	FPM-602	FPM-602X
Detector	Ge	GeX
Power range (dBm) ^b	10 to -70	26 to -55
Wavelength range (nm)	800 to 1650	800 to 1650
Calibrated wavelengths (nm)	800, 820, 830, 840, 850, 860, 870, 880, 910, 980, 1270, 1280, 1290, 1300, 1310, 1320, 1330, 1340, 1350, 1370, 1390, 1410, 1430, 1450, 1460, 1470, 1480, 1490, 1500, 1510, 1520, 1530, 1540, 1550, 1560, 1570, 1580, 1590, 1600, 1610, 1620, 1630, 1640, 1650	Same calibrated wavelengths as the FPM-602, plus 1060
Power uncertainty ^c	±5 % ± 0.1 nW	±5 % ± 3 nW
Resolution (dB)	±0.01 (10 dBm to -60 dBm)	±0.01 (26 dBm to -45 dBm)
Automatic offset nulling ^d	Yes	Yes
Display units	dB, dBm, W	dB, dBm, W
Tone detection	270 Hz, 1 kHz and 2 kHz	270 Hz, 1 kHz and 2 kHz
Auto-switching ^e	Yes	Yes
Warm-up period (min) ^f	0	0
Data storage (items)	more than 1000	more than 1000
Battery life (hours) (typical)	72	72
Warranty and recommended recalibration interval (years)	3	3

GENERAL SPECIFICATIONS

Size (H x W x D)	190 mm x 100 mm x 62 mm	(7 1/2 in x 4 in x 2 1/2 in)
Weight	0.48 kg	(1.1 lb)
Temperature	operating: -10 °C to 50 °C storage: -40 °C to 70 °C	(14 °F to 122 °F) (-40 °F to 158 °F)
Relative humidity	0 % to 95 % non-condensing	

STANDARD ACCESSORIES

User guide, Certificate of Calibration, instrument stickers in six languages, AC adapter/charger, lithium ion battery, shoulder strap, hard carrying case, USB cable.

NOTES

- Guaranteed unless otherwise specified. All specifications valid at 1550 nm and 23 °C ± 1 °C, with an FC connector.
- In CW mode; sensitivity defined as 6 x rms noise level.
- For calibrated wavelengths. Valid up to 20 dBm for FPM-602X.
- For power > -40 dBm for FPM-602, and > -25 dBm for FPM-602X.
- At 850 nm, 1300 nm, 1310 nm, 1490 nm, 1550 nm and 1650 nm; for power > -50 dBm for FPM-602 and > -40 dBm (typical) for FPM-602X.
- For a variation of ≤ 0.06 dB at power levels ≥ -40 dBm for FPM-602 and ≥ -25 dBm for FPM-602X.

ORDERING INFORMATION

FPM-60X-XX

Model

FPM-602 = Ge detector
FPM-602X = High-power Ge detector

Example: FPM-602X-FOA-22

Connector Adapter

FOA-12 = Biconic
FOA-14 = D4, D4/PC
FOA-16 = SMA/905, SMA/906
FOA-22 = FC (PC/SPC/UPC/APC), NEC-D3
FOA-28 = DIN 47256 (LSA); DIN 47256 (PC/APC)
FOA-32 = ST (PC/SPC/UPC)
FOA-40 = Diamond HMS-0HFS-3 (3.5 mm)

FOA-54 = SC (PC/SPC/UPC/APC)
FOA-76 = FSMA HMS-10/AG, HFS-10/AG
FOA-78 = Radiall EC
FOA-84 = Diamond HMS-10, HFS-13
FOA-96B = E-2000
FOA-98 = LC
FOA-99 = MU

Rugged Handheld Solutions

OPTICAL - OTDRs - OLTSs - Power meters - Light sources - Talk sets	COPPER ACCESS - ADSL/ADSL2+, SHDSL, VDSL test sets - VoIP and IPTV test sets - Ethernet test sets - POTS test sets
--	---

Platform-Based Solutions

OPTICAL FIBER - OTDRs - OLTSs - ORL meters - Variable attenuators	DWDM TEST SYSTEMS - OSAs - PMD analyzers - Chromatic dispersion analyzer	TRANSPORT AND DATA COM - Next Generation SONET/SDH and OTN testers - SONET/DSn (DS0 to OC-192) testers - SDH/PDH (64 kb/s to STM-64) testers - T1/T3, E1 testers - 10/100M and Gigabit Ethernet testers - Fibre Channel testers - 10 Gigabit Ethernet testers
--	--	---



根网通讯设备(北京)有限公司
 邮件: enquiry@rootscomm.com.cn
 网址: www.rootscomm.com.cn
 ROOTS Communication Equipment (Beijing) Co.,Ltd.
 北京市朝阳区芳园西路5号 丽园中心508室 100015
 电话: +86-10-64382686
 传真: +86-10-64382703



EXPERTISE REACHING OUT



Printed in Canada 06/12